

Linfocitos B

Linfocitos T

Célula presentadora
de antígenos

Antígeno

BCR

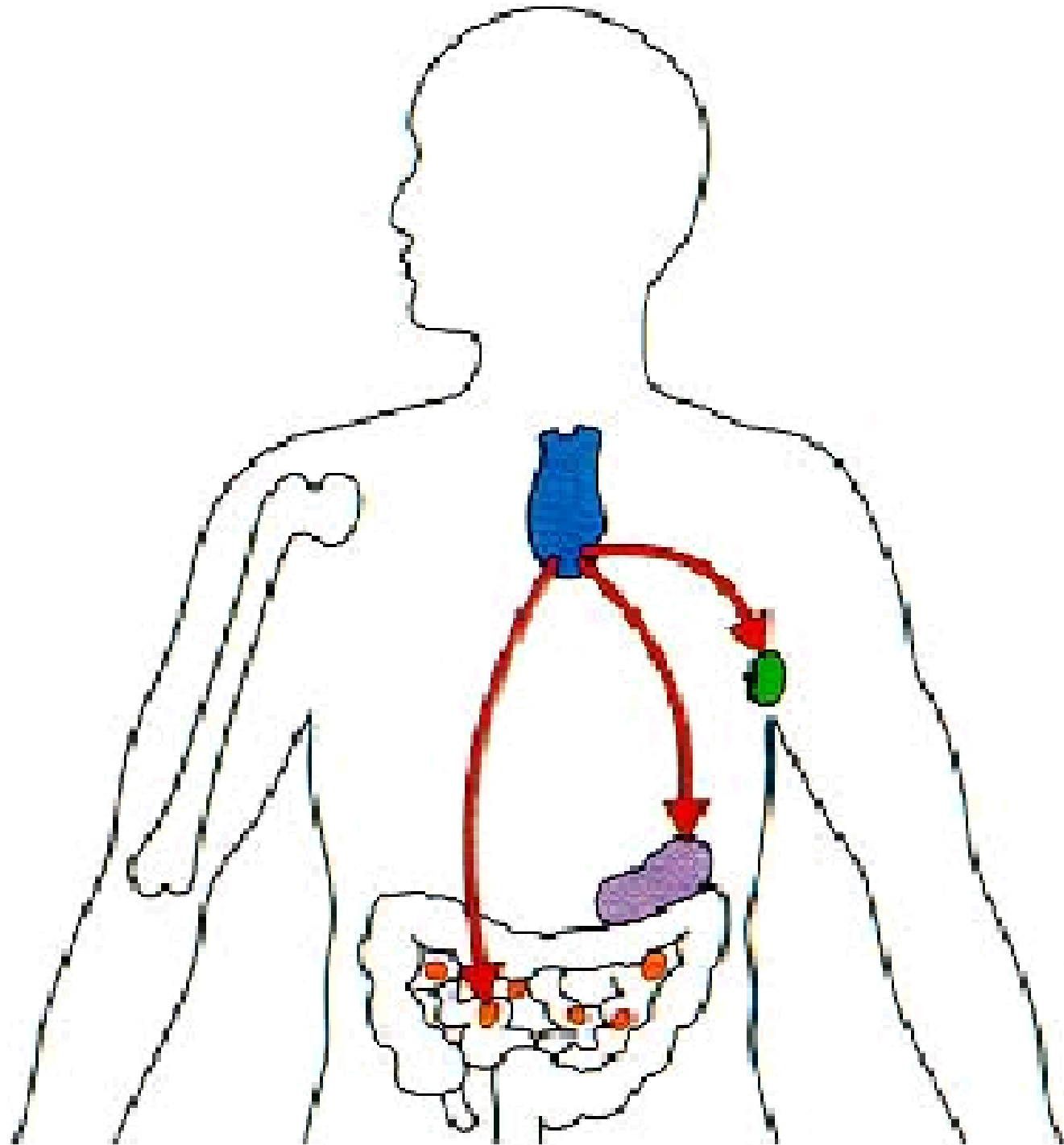
TCR

Péptido antigénico

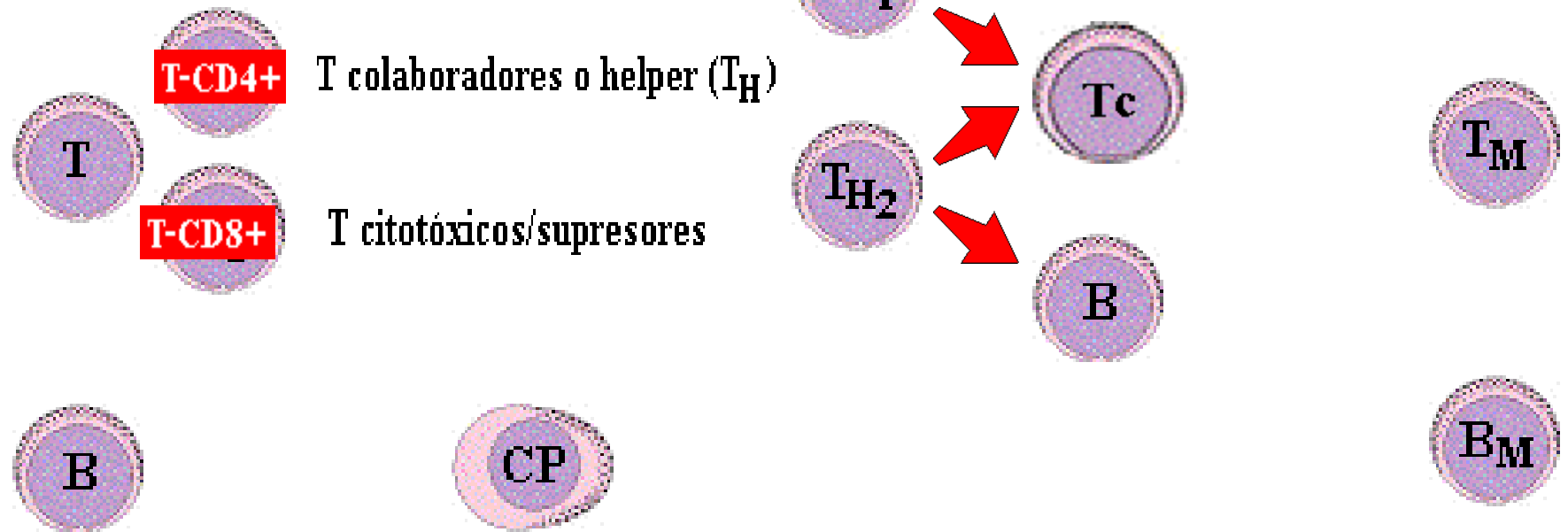
Molécula de
histocompatibilidad

Citoquinas

**Moléculas de adhesión
y activación celular**



POBLACIONES Y SUBPOBLACIONES LINFOCITARIAS



Células nulas (ni T ni B) o células de la tercera población



NK

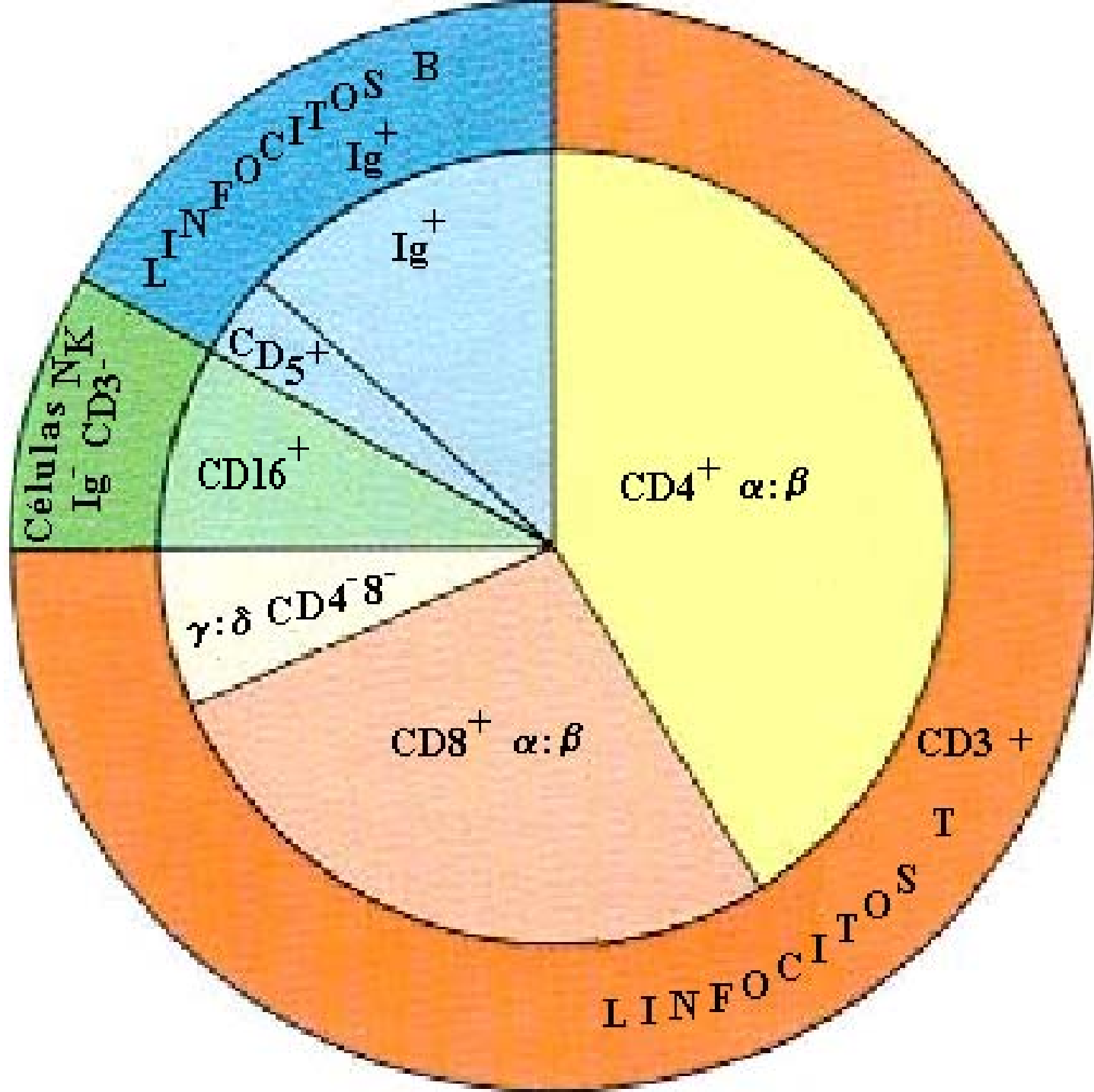
Linfocitos grandes granulares LGL

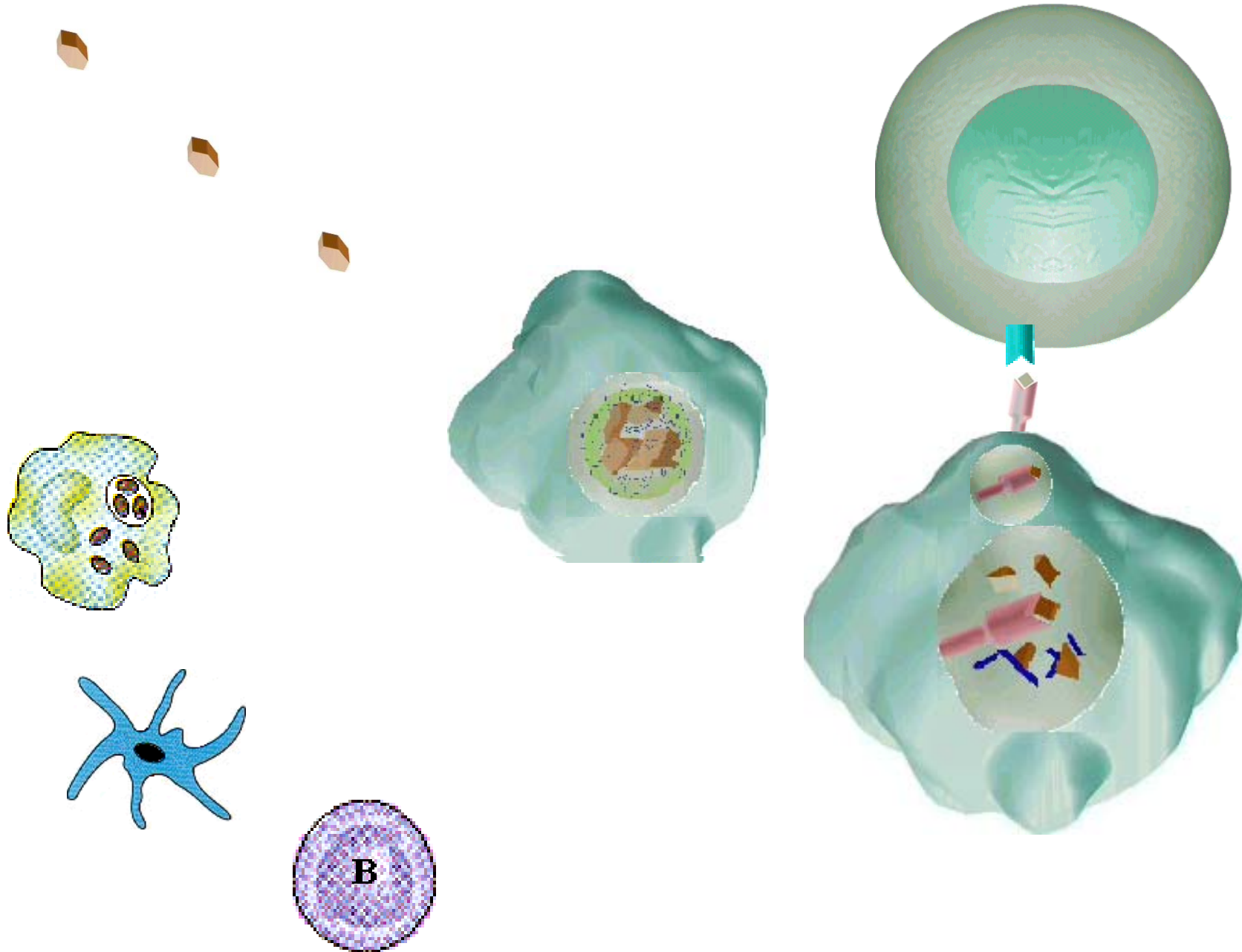
Células NK (natural killer)

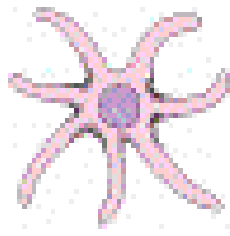


NK

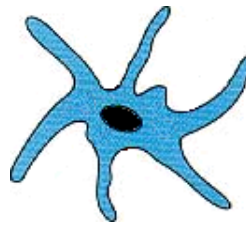
Linfocitos pequeños agranulares SAL



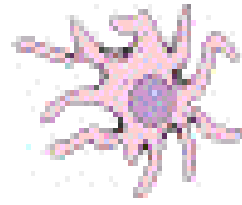




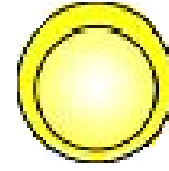
Célula de Langerhans



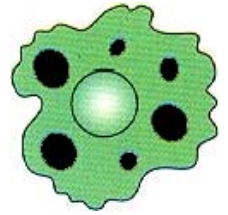
Célula interdigitante



Célula folicular dendrítica



Linfocito B



Macrófago

MHC clase II

+

+

-

+

(+)

Receptor Fc γ

+

-

+

+

+

CR1

+

-

+

+

+

CR2

-

-

+

+

-

Función fagocítica

-

-

-

-

+